

AGENDA

Meeting: TIDWORTH AREA BOARD
Place: Pheonix Hall, High Street, Netheravon, Wiltshire, SP4 9PJ
Date: Monday 16 November 2015
Time: 7.00 pm

Including the Parishes of Chute, Chute Forest, Collingbourne Ducis, Collingbourne Kingston, Enford, Everleigh, Fittleton, Ludgershall, Netheravon, Tidcombe and Fosbury, and Tidworth.

The Area Board welcomes and invites contributions from members of the public. The chairman will try to ensure that everyone who wishes to speak will have the opportunity to do so.

If you have any requirements that would make your attendance at the meeting easier, please contact your Democratic Services Officer.

Refreshments and networking opportunities will be available from 6:30pm.

Please direct any enquiries on this Agenda to Kevin Fielding (Democratic Services Officer), on 01249 706612 or email kevin.fielding@wiltshire.gov.uk

or Marc Read (Tidworth Community Engagement Manager), 01722 434557 or email marc.read@wiltshire.gov.uk

All the papers connected with this meeting are available on the Council's website at www.wiltshire.gov.uk

Press enquiries to Communications on direct lines (01225) 713114 / 713115.

Wiltshire Councillors

Chris Williams (**Chairman**)

Mark Connolly (**Vice Chairman**)

Charles Howard

Ludgershall and Perham Down

Tidworth

The Collingbournes and Netheravon

RECORDING AND BROADCASTING NOTIFICATION

Wiltshire Council may record this meeting for live and/or subsequent broadcast on the Council's website at <http://www.wiltshire.public-i.tv>. At the start of the meeting, the Chairman will confirm if all or part of the meeting is being recorded. The images and sound recordings may also be used for training purposes within the Council.

By entering the meeting room you are consenting to being recorded and to the use of those images and recordings for broadcasting and/or training purposes.

The meeting may also be recorded by the press or members of the public.

Any person or organisation choosing to film, record or broadcast any meeting of the Council, its Cabinet or committees is responsible for any claims or other liability resulting from them so doing and by choosing to film, record or broadcast proceedings they accept that they are required to indemnify the Council, its members and officers in relation to any such claims or liabilities.

Details of the Council's Guidance on the Recording and Webcasting of Meetings is available on the Council's website along with this agenda and available on request.

If you have any queries please contact Democratic Services using the contact details above.

	Time
<p>1 Chairman's Announcements, Welcome and Introductions <i>(Pages 1 - 6)</i></p> <p>Announcements:</p> <ul style="list-style-type: none"> • NHS Health Checks. • Army Rebasing. 	15 mins
<p>2 Apologies for Absence</p>	
<p>3 Declarations of Interest</p> <p>To receive any declarations of disclosable interests or dispensations granted by the Standards Committee.</p>	
<p>4 Minutes <i>(Pages 7 - 16)</i></p> <p>To confirm the minutes of the meeting held on Monday 21 September 2015.</p>	
<p>5 Child Poverty Profiles</p> <p>Presentation from Justine Womack - Consultant in Public Health, Wiltshire Council, about its child poverty profile in order to support and consider any local action to prevent, reduce and mitigate its impact on children in the area.</p>	20 mins
<p>6 Footpaths and Volunteer Involvement</p> <p>Presentation from Nick Cowen – Senior Rights of Way Warden, Wiltshire Council.</p>	20 mins
<p>7 Loan Sharks</p> <p>Presentation from Wendy Loades - Liaise Officer, England Illegal Money Lending Team.</p>	20 mins
<p>8 Local Youth Network (LYN) update and Grant Funding</p> <p>To receive an update and determine any applications for Youth funding.</p>	5 mins

	Wendy Higginson – Community Youth Officer.	
9	Community Area Transport Group (CAT-G) - update Cllr Mark Connolly.	5 mins
10	Delegated Authority Decisions The Area Board members are asked to agree: <ul style="list-style-type: none"> • <i>That in respect of urgent matters that may arise, the Community Youth Officer, following consultation with the Chairman and Vice-Chairman of the Area Board, may authorise expenditure to support youth projects from the youth budget of up to £5,000 in total between meetings of an Area Board. The decision and reasons why it was considered urgent will be reported to the next meeting of the Area Board.</i> • <i>That in respect of urgent matters that may arise, the Community Engagement Manager, following consultation with the Chairman and Vice-Chairman of the Area Board, may authorise expenditure to support community projects from the delegated budget of up to £5,000 in total between meetings of an Area Board. The decision and reasons why it was considered urgent will be reported to the next meeting of the Area Board.</i> 	
11	Older Peoples Champion Marc Read – Community Engagement Manager.	5 mins
12	Updates from Town and Parish Councils, the Police, the Army, NHS, TCAP and other Partners (Pages 17 - 22) To receive any updates.	15 mins
13	Community Area Grants To determine any applications for Community Area Grants. Grant application packs for the Community Area Grants Scheme are available from the Community Area Manager or electronically at: http://www.wiltshire.gov.uk/communityandliving/areaboards/areaboards	10 mins

rdscommunitygrantsscheme.htm.

14 **Date of Next Meeting, Evaluation and Close**

The next meeting of the Tidworth Area Board will be on Monday 18 January 2016 at the Wellington Academy, Tidworth Rd, Tidworth, Wiltshire SP11 9RR.

Chairman's Announcements

Subject:	NHS Health Checks
Officer Contact Details:	Jane Vowles Jane.Vowles@Wiltshire.gov.uk Telephone 0300 003 4566
Weblink:	www.wiltshire.gov.uk/nhshealthcheck

Summary of announcement:

Wiltshire residents are encouraged to take advantage of free NHS Health Checks, to help reduce the possibility of them developing life threatening conditions and illnesses.

The NHS Health Check programme, commissioned by Wiltshire Council and provided by local GP practices, helps to check people's risk of developing conditions such as heart disease, diabetes and others, with support and advice also provided to help them reduce or manage that risk.

Everyone between the ages of 40 and 74, who has not already been diagnosed with one of these conditions or is otherwise ineligible, is invited every five years to have a free NHS Health Check.

The check only takes about 20 minutes and people will be asked some simple questions related to their lifestyles, family history and medication use. Some simple tests including blood pressure will be taken as well as an instant blood test to check cholesterol levels. The results will be discussed and further advice and support provided. Should they be required, additional tests will be carried out.

Keith Humphries, cabinet member for public health: "We want more people to take up the offer of these free NHS Health Checks as they can prevent people from getting a number of serious conditions.

"The check doesn't take long but could have long-term benefits and perhaps offer some reassurance and support to people who may be a little worried about their health."

Dr Daz Harding: "GP practices will invite people to attend their NHS Health Check. Many people decline the invite as they feel fit and healthy, or they are too busy, but attending the NHS Health Check is important as many of diseases such as high blood pressure and type II diabetes can come on gradually with no symptoms. So I would urge everybody, when they receive their invite, to make that appointment and attend."

Army Basing Briefing for the Amesbury, Pewsey, Tidworth and Warminster Area Boards - Updated 11 November 2015

Background

The government's Army Basing announcement in March 2013 advised of around 4,300 extra Service personnel moving to Wiltshire by the end of the decade. They will be accompanied by their families, bringing the total number of additional people estimated to be moving to the area to 7,600. These plans will require additional levels of infrastructure and services to be provided by Wiltshire Council.

November 2015 Update

Army Basing Press Release 5 November 2015

The MOD issued a press release which is replicated at the foot of this briefing. It affirms that the final unit relocations from Germany (to Wiltshire) will be implemented by 2019. It has been issued ahead of the 2015 Strategic Defence and Security Review to provide certainty to Army and civilian personnel, and their families, allowing them to plan for the future.

Wiltshire Council has been planning to ensure all the facilities that it is required to provide to support the programme (*for example schools*) would be in place in the event of the MOD seeking to bring forward the relocation of Service personnel. As the MOD has confirmed that the final moves will take place in 2019, Wiltshire Council is re-evaluating precisely how these programmes will be taken forward.

It will be noted that the return date for 5 Rifles remains as the summer of 2016. Accordingly the planned expansion of schools (St Leonard's and Kiwi) required to cater for 5 Rifles' relocation and other places needed for increases in population not attributed to Army Basing is progressing. Further detail follows.

Schools

Wiltshire Council is continuing with plans to prepare the infrastructure and provision required to welcome the Service personnel and their families to Wiltshire. This includes progressing school infrastructure to ensure there will be sufficient and suitable new school places available for all incoming families. In this regard, planning permission for St Leonards Primary (Bulford) was obtained on 29 September and planning permission for Kiwi Primary is expected shortly. Contracts are being negotiated for these projects to allow the first additional places to be available by Easter 2016. Some of these places are required for the increasing population not attributed to the Army Basing Programme.

Planning for the transfer of St Michael's Figheldean Primary to Larkhill continues, as does provisional planning for the additional secondary places and Ludgershall needs, though the timing of build completion is being evaluated in light of the MOD announcement.

Planning Applications and Associated Matters

- Priority Works

All priority works applications covering relatively small scale development within the camps have been submitted and determined under delegated powers.

- Camps

The application for the main development works at Perham Down has been determined. Those for Bulford, Tidworth and Larkhill have been received and DIO is working closely with Wiltshire Council and other statutory authorities to ensure the requirements of the River Avon Nutrient Management Plan and the Salisbury Plain Water Management Strategy are met. Discussions are ongoing regarding the Upavon Main Works planning application, which is expected to be submitted in 2016.

- Service Family Accommodation (SFA)

All three SFA applications have been submitted. Details are as follows:

Settlement	PA Reference	Units	Notes
Ludgershall	15/02770/FUL	246	Consultation ended 5 June 2015
Bulford	15/04006/FUL	227	Consultation ended 18 June 2015
Larkhill	15/05540/FUL	444	Consultation ended 23 July, 2015

- Planning obligations (Section 106 Agreement)

The SFA applications are due to be considered at a Strategic Planning Committee, which will be arranged as soon as the negotiations on MOD contributions towards infrastructure to support the Army Basing Programme have concluded and are reflected in the draft s106 agreement.

Community Infrastructure

Under the proposed planning obligations, Ludgershall Town Council has agreed in principle to accept from the MOD an office building at Corunna Barracks, which lies within the site of 0.6 hectares being offered for community use to create a new community centre. This is in addition to the land DIO is offering (0.3 hectares) at Larkhill. A local Steering Group (SG) comprising the town council, Wiltshire Council, MOD representation and other local community groups is being formed to take forward planning of this facility. The first meeting of the SG is to be held on 18th November. Wiltshire Council has agreed to provide modest funding to adapt the building to meet the needs of its future use. It is hoped to have the facility available when the first families move to the Ludgershall SFA site. The group is seeking grant funding to support the facility.

Integration Matters

Wiltshire Council and the Army understand the importance of successful integration of the military and civilian populations in order to fulfil the aim of creating sustainable, resilient and balanced communities. As the arrival of Army units draws nearer, Wiltshire Council is seeking to engage with the Service personnel and their families in Germany. A visit of council officers to Germany took place in July this year. On 29th September 2015, six wives from 5 Rifles visited Wiltshire to see for themselves what the area was like. During this visit they received a briefing from Wiltshire Council on education, employment and other matters. Further liaison with incoming units will continue.

Wiltshire Council Review

The Local Government Association has agreed to carry out a Peer Challenge Review of Wiltshire Council's management of the Army Basing Programme. This has now been scheduled for April 2016 and it is planned for a Wiltshire councillor from the Overview and Scrutiny Committee to be appointed as one of the review team members. The review will assess how Wiltshire Council has managed the programme to date, its readiness to proceed with later phases and will draw out lessons learned that can be applied to other projects.

PRESS RELEASE

FINAL ARMY MOVES FROM GERMANY SET FOR 2019

THE Ministry of Defence has today (5 November) confirmed that the final Field Army units will return from Germany in 2019. The final units, including those from 20 Armoured Infantry Brigade, currently based around Paderborn and Sennelager in Germany, will return to their new home on Salisbury Plain, Wiltshire in the final phase of the Army Basing Programme.

In line with commitments made in the 2010 Strategic Defence and Security Review, the Army Basing Programme has already successfully relocated around 74% of personnel from Germany since 2010, with over 5,000 Service personnel, plus their families, having returned to the UK this summer. All of the Unit moves planned for 2016 and 2017 will go ahead as planned.

The timing of the move has been confirmed ahead of the 2015 Strategic Defence and Security Review to provide certainty to Army and civilian personnel, and their families, allowing them to plan for the future.

Major General Alastair Dickinson CBE, Director of Army Basing and Infrastructure said:

“By confirming the timetable to bring the final units back from Germany to their new home on Salisbury Plain in 2019, we are providing our Service personnel and their families with greater certainty to allow them to plan for their futures. It also allows us to finalise our plans with Wiltshire Council and industry partners who will deliver the supporting infrastructure in the UK.

“In Germany we will continue to deliver the high quality of services and facilities that our personnel and their families need so they are well supported until they move.

“This is a significant milestone in delivering the Army’s structure as set out in the last SDSR.”

While fewer personnel will remain in Germany after 2019, Germany will remain one of our most valued NATO and European partners, and we will continue to intensify and deepen our security and defence relationship with them.

Both the Army and the Defence Infrastructure Organisation (DIO) will continue to work with Wiltshire Council, local and industry partners, to make sure that the accommodation, infrastructure and services needed by our Service personnel and their families are in place. In Germany, work will continue with the Federal Authorities to hand-back the German estate.

Colin Wood MBE, Defence Infrastructure Organisation Chief Operating Officer said:

“Our priority is to provide a better estate for our Armed Forces and this will allow us to finalise our plans for brand new living and working accommodation for troops and their families.

“The MOD is investing more than £800 million in infrastructure in and around the Salisbury Plain area. This will boost the local economy and provide some 1,000 brand new homes for Service families, thousands of new bed spaces for single soldiers and the construction, conversion or refurbishment of more than 250 other buildings such as

offices, garages, workshops and Mess facilities.”

Baroness Scott of Bybrook OBE, Leader of Wiltshire Council said:

“Since the Army Basing Programme was first announced, we have been working closely with the Army, the DIO and partner organisations to ensure the necessary community infrastructure including improvements to schools, roads and leisure is in place. The confirmation of when Service personnel will arrive provides a clear timetable to put in place these plans which we have been sharing with local communities.

“We look forward to welcoming service personnel and their families and, as well as providing the infrastructure needed, we will also do all we can to help them to be part of the local community as they make their home in Wiltshire.”

ENDS

(Briefed previously - but repeated for reference if required)

Location and Number of Net Additional Personnel Arising from Army Basing

Location	SLA Pop	SFA Population			Total
		Military	Spouses	Children	
Larkhill	1,513	540	540	982	3,575
Bulford	494	241	241	427	1,403
Tidworth and Ludgershall	836	400	400	725	2,361
Upavon	254	0	0	0	254
Total	3,097	1,181	1,181	2,134	7,593

SFA to be provided:

Location	SFA units	Notes
Larkhill	444	
Bulford	227	This includes 36 units that will replace existing SFA, so the net new requirement is 191 for the Army Basing Programme.
Ludgershall	246	
Tidworth	0	The MOD is acquiring 100 units from a commercial development in Tidworth - (Riverbourne Fields to meet the Army Basing Programme requirements).
Upavon	0	
Total	917	Taking into account the above two notes , the net Army Basing requirement is for 981 SFA homes.

MINUTES

Meeting: TIDWORTH AREA BOARD
Place: Tidworth Garrison Theatre, St Andrew's Road, Tidworth, SP9 7EP
Date: 21 September 2015
Start Time: 7.00 pm
Finish Time: 8.50 am

Please direct any enquiries on these minutes to:

Kevin Fielding (Democratic Services Officer), Tel: 01249 706612 or (e-mail) kevin.fielding@wiltshire.gov.uk

Papers available on the Council's website at www.wiltshire.gov.uk

In Attendance:

Wiltshire Councillors

Cllr Chris Williams, Cllr Mark Connolly and Cllr Charles Howard

Wiltshire Council Officers

Marc Read – Community Engagement Manager (CEM)

Kevin Fielding – Democratic Services Officer

Town and Parish Councillors

Enford Parish Council – Anthony D'arcy-Irvine

Everleigh Parish Council – Denis Bottomley

Fittleton Parish Council – Mary Randle

Ludgershall Town Council – Owen & Janet White

Netheravon Parish Council – Roger Hayward

Tidworth Town Council – Humph Jones, Chris Franklin & Corby Kemp

Partners

Wiltshire Police – Insp Christian Lange & Sgt Andrea Faircloth

Wiltshire Police & Crime Commissioner – Angus Macpherson

Tidworth Garrison – Col James Denny

Tidworth Community Area Partnership – Tony Pickernell & Reia Jones

Youth Services – Wendy Higginson

Healthwatch Wiltshire – Paul Lefever

Total in attendance: 48



<u>Agenda Item No.</u>	<u>Summary of Issues Discussed and Decision</u>
1	<p><u>Chairman's Welcome, Announcements and Introductions</u></p> <p>The Chairman welcomed everyone to the Garrison Theatre for the Tidworth Area Board.</p> <p>The following Chairman's Announcements were noted:</p> <ul style="list-style-type: none"> • School place planning. • Army Rebasing – update.
2	<p><u>Apologies for Absence</u></p> <p>Apologies for absence were received from:</p> <p>Alistair Cunningham – Wiltshire Council Mike Franklin – Wiltshire Fire & Rescue Service David Wildman – Chamber of Commerce</p>
3	<p><u>Declarations of Interest</u></p> <p>Agenda item No.11 Tidworth War Memorial Committee, community area grant application - That Cllr Mark Connolly had attended the last meeting of the Tidworth War Memorial Committee as an observer.</p>
4	<p><u>Minutes</u></p> <p>Decision</p> <ul style="list-style-type: none"> • The minutes of the meeting held on Monday 20 July 2015 were confirmed as the correct record. <p>Matters Arising</p> <ul style="list-style-type: none"> • That the Tidworth community area Emergency Planning Workshop would be held on Wednesday 14 October, hosted by Tidworth Town Council at the Tidworth Community Centre. • Footpaths – Nick Cowan – Rights of Way Officer, Wiltshire Council would be at the next Tidworth Area Board meeting. • Older Persons Champion – It was hoped that the job description

	would be available by the next Tidworth Area Board meeting.
5	<p><u>Child Poverty Profiles</u></p> <p>This presentation was deferred to a future meeting.</p>
6	<p><u>Shaping the Future of Children's Centres in Wiltshire</u></p> <p>Lucy-Anne Bryant - Lead Commissioner, Joint Commissioning, Wiltshire Council gave a presentation that highlighted changes to the way Wiltshire Council would run Children's Centres across the county.</p> <p>Points made included:</p> <p>What are Children's Centres?</p> <ul style="list-style-type: none"> • In line with Government requirements Wiltshire created 30 designated Sure Start children's centres between 2006 – 2011. • The initial centres were located within areas with the highest levels of deprivation and additional centres were set up in areas with a higher population of children aged under five. <p>Their Core Purpose was:</p> <ul style="list-style-type: none"> • To support good early child development and school readiness. • To raise parenting aspirations and improve parenting skills. • To improve child and family health and life chances. <p>Why are we consulting on the future delivery of children's centre services?</p> <ul style="list-style-type: none"> • Wiltshire's children's centre services are delivered by four of voluntary and community sector organisations and these contracts finish in June 2016. • Wiltshire Council wants to maximise support for families living in the most deprived areas whilst retaining countywide service coverage. • The Council has less funding to deliver these services and so we need to find ways to ensure that the money spent has the greatest positive impact on young children's development. <p>Proposed future delivery model for Wiltshire</p> <p>From July 2016, it is proposed that children's centre services are delivered from 15 key buildings based in four geographical clusters – North, East, South and West.</p> <p>The proposals on where children's centre should be located in the future are</p>

based on the following factors:

- the level of deprivation in each area.
- the number of children aged under five living in the area.
- the suitability of current buildings to deliver children's centre services.
- the potential to expand childcare provision.

Proposed children's centre buildings

- North children's centre buildings:
 - Cricklade; Royal Wootton Bassett; Chippenham (The Rise); Chippenham (Spring Rise); Calne.
- South children's centre buildings:
 - Salisbury City; Salisbury (Little Folly); Bulford; Tisbury.
- East children's centre buildings:
 - Tidworth (Windmill Hill); Pewsey; Devizes South.
- West children's centre buildings:
 - Trowbridge (Studley Green)
 - Westbury (White Horse)
 - Melksham (Canberra)

What do these proposals mean for the delivery of help for families with young children?

- Children's centre staff will continue front line delivery of services and support in a wider range of locations through more use of other community buildings.
- Proposed children's centre buildings will be used as a base for staff in each of these areas
- Families with young children will continue to access support through more increased partnership working with Midwives and Health Visitors.
- Areas with the greatest levels of need and more young children will continue to have access to a designated children's centre building in or very close to their local community.
- There will be greater availability of childcare places in communities where more provision is needed.

The Chairman thanked Lucy-Anne Bryant for her presentation.

	<p>Liz Froud – Julia’s House gave a short presentation to raise awareness of the charity and how it could be supported in its bid to open a Hospice in Wiltshire.</p> <p>The Chairman thanked Liz Froud for her presentation and wished the Hospice project well.</p>
8	<p><u>PCC Annual Report & Police and Crime Plan 2015 - 17</u></p> <p>Angus Macpherson – Wiltshire Police & Crime Commissioner gave a presentation that outlined the Annual Report on the outcomes of the previous Police and Crime Plan and to present the new Plan for 2015 – 17.</p> <p>Points made included.</p> <p>Achievements: 2014/15</p> <ul style="list-style-type: none"> • 2.7% reduction in crimes (885 fewer than last year). • 4.2% reduction in anti-social behaviour incidents. • Wiltshire Police rated Good by HMIC in PEEL. • 95% of people feel safe during the day. <p>Aim</p> <ul style="list-style-type: none"> • Keep Wiltshire and Swindon as one of the safest places in the country. <p>Three commitments to the public</p> <ul style="list-style-type: none"> • Neighbourhood teams are at the centre of policing in Wiltshire. • Neighbourhood policing will be protected by shifting resources to the front line. • Any increase in police element of council tax will be used to reduce the impact of central funding reductions on neighbourhood policing. <p>Four Priorities</p> <p>Priority 1: Prevent Crime and anti-social behavior. Priority 2: Protecting the most vulnerable in society. Priority 3: Putting victims and witnesses at the heart of everything we do. Priority 4: Secure high quality, efficient and trusted services.</p> <p>Question from the floor included:</p> <p>Do you intend to increase the number of officers covering rural areas? <i>a. Better technology, with increased remote working now meant that officers could spend more time on their beats, rather than tethered to a desk at a Police station.</i></p>

	<p>Are you looking to recruit more special Police officers? <i>a. Yes, most definitely. The force recently held a recruitment day to promote this aspect of policing.</i></p> <p>The Chairman thanked Angus Macpherson for his presentation and commented that the Neighbourhood Policing Teams were doing excellent work across the community area.</p>
9	<p><u>Local Youth Network (LYN) update and Grant Funding</u></p> <p>Youth Grant Funding</p> <p>Decision</p> <p>The Tidworth Area Board agreed the following Youth Grant applications:</p> <ul style="list-style-type: none"> • LYN Zorb Football awarded £630 • LYN Youth Shelter awarded £1,020 <p>Wendy Higginson advised that:</p> <ul style="list-style-type: none"> • Around 30+ young people had enjoyed the recent zorb football, and now are looking to do it again! • That a 6 week project was planned to start during November at the Wellington Academy. • Graffiti and mountain biking projects currently in the pipeline. • Looking to employ a youth worker. <p>The Chairman thanked Wendy Higginson for her update.</p>
10	<p><u>Community Area Transport Group (CAT-G) - update</u></p> <p>CAT-G Funding</p> <p>Decision</p> <p>That the Tidworth Area Board agrees the following funding:</p> <ul style="list-style-type: none"> • £1,000 awarded for pedestrian crossing for Pennings Road between Connolly Way and the Hill Top estate to Wellington Academy Primary School. <p>Cllr Mark Connolly advised that:</p>

	<ul style="list-style-type: none"> • Next CAT-G meeting on Monday 28 September. • It was agreed that the Community Engagement Manager would draft a letter on behalf of the Tidworth Area Board to the Cabinet member for Highways, Wiltshire Council requesting an explanation as when highway repairs were due to commence on the A338. <p>The Chairman thanked Cllr Connolly for his update.</p>
11	<p><u>Community Area Grants</u></p> <p>The Wiltshire Councillors were asked to consider two applications seeking 2015/16 Community Area Grant funding.</p> <p>Decision Tidworth War Memorial Committee awarded £5,000 for construction of Tidworth war Memorial.</p> <p>Reason <i>The application meets grant criteria 2015/16.</i></p> <p>Decision Ludgershall Memorial Hall Committee awarded £1,215 for installation of a fire alarm system.</p> <p>Reason <i>The application meets grant criteria 2015/16.</i></p>
12	<p><u>Updates from Town and Parish Councils, the Police, the Army, NHS, TCAP and other Partners</u></p> <p>Wiltshire Police – Inspector Christian Lange The written update was noted.</p> <p>Tidworth Garrison – Col James Denny</p> <ul style="list-style-type: none"> • Army Rebasing – some delays now in the expected time frame. • That building had started on the cycle/pedestrian footpath linking the Wellington Academy to Perham Down. <p>Healthwatch Wiltshire – Paul Lefever The written report was noted.</p>

	<p>Tidworth Community Area Partnership – Tony Pickernell</p> <ul style="list-style-type: none"> • Proms concert with the Artillery Band on Monday 26 October. • Primary Schools pantomime on Thursday 3 December at the Garrison Theatre. • TCAP had meet with Spice to discuss a way forward with the Time Credits scheme. <p>Tidworth Town Council – Corby Kemp</p> <ul style="list-style-type: none"> • That the refurbished Military Chapel was now open on Saturdays. <p>Ludgershall Town Council – Owen White</p> <ul style="list-style-type: none"> • That this year’s Remembrance wreath laying was expected to have some 300 troops parading through Ludgershall. <p>Everleigh Parish Council The written report was noted.</p> <p>Several concerns were raised by attendees at the meeting re Wiltshire Council.</p> <ul style="list-style-type: none"> • Perceived slow/poor service when phoning. • Departments not answering or acknowledging emails. • Recycling service. <p>The Chairman advised anyone with an issue relating to Wiltshire Council services to speak with their Area Board member.</p> <p>The Chairman thanked everybody for their updates.</p>
13	<p><u>Date of Next Meeting, Evaluation and Close</u></p> <p>The next meeting of the Tidworth Area Board will be on Monday 16 November 2015 at the Pheonix Hall, Netheravon.</p>

Crime and Community Safety Briefing Paper Tidworth Community Area Board November 2015



1. Neighbourhood Policing

Sector Commander – Inspector Christian Lange
Team Sgt: PS Andrea Faircloth

Tidworth Town

Temp Beat Manager – PC Becks Lennane
PCSO - Natalie Cleife

Ludgershall and Rural

Beat Manager – PC Tim Bunt
PCSO – Maria Downham

2. NPTs - Current Priorities & Consultation Opportunities:

Up-to-date details about Neighbourhood Policing Teams including team membership, current priorities and forthcoming community consultation events can be found on our Wiltshire Police Website.

□ Visit the new and improved website at: www.wiltshire.police.uk

3. Performance and Other Local Issues

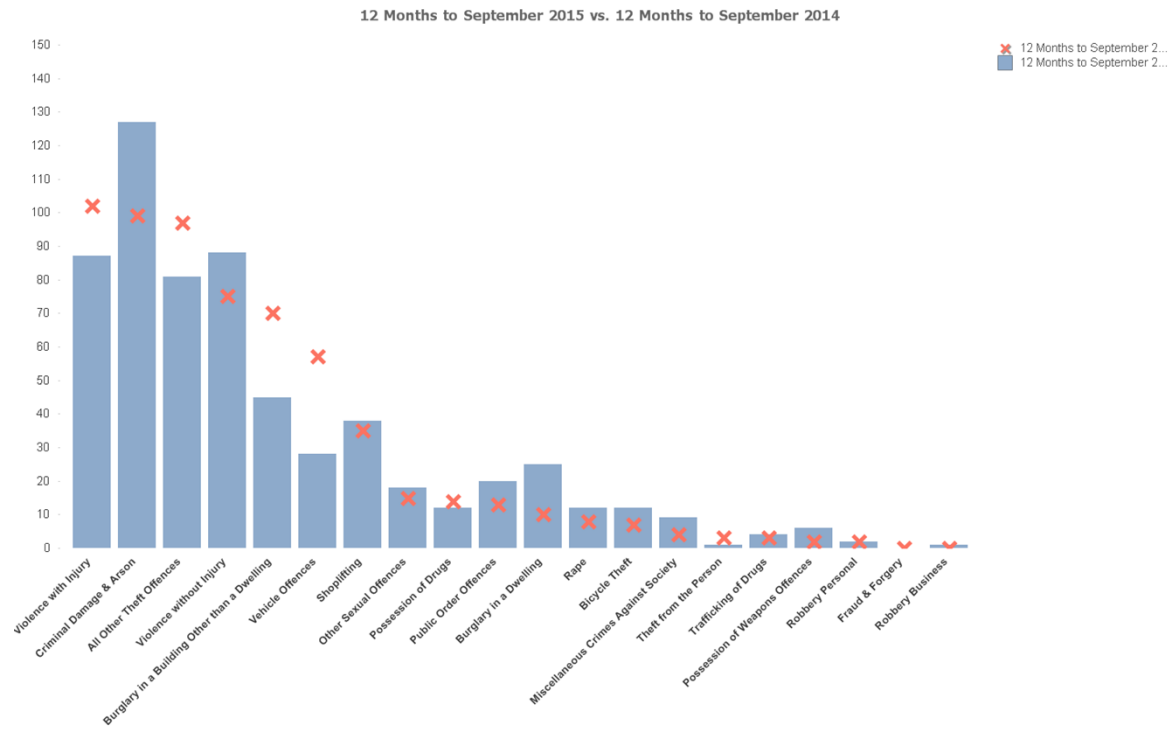
The overall crime figures for the Tidworth Community Area Community area continue to remain stable with certain crime types such as criminal damage and 'violence without injury' seeing an increase whilst other offences such as theft and vehicles crime decreasing over the past year.

The neighbourhood team continues to deal with speeding issues across the community area as this was raised by the Neighbourhood Tasking Group meeting. The NPT has also been made aware of a variety of ASB issues in the area and a proactive operation was run at the end October 2015 using plain clothed officers from neighbouring area. This was successful and a number of people were dealt with.

Christian Lange

Sector Commander for Amesbury and Tidworth

CRIME & DETECTIONS (September 2015 compared to previous year)





Wiltshire Fire & Rescue Service

Briefing for Community Area Board & Localities November 2015

Fire & Rescue Service confirms move to community campus in April 2016

The new Dorset & Wiltshire Fire and Rescue Service will occupy part of the Five Rivers Community Campus in Salisbury, following the signing of a lease with owners Wiltshire Council.

The campus will be home to the Service's 'strategic hub', providing:

- A central workplace for its management team and some support functions;
- A number of flexible working options for the new Service personnel, as part of the wider approach to working across Wiltshire and Dorset; and
- A meeting place for teams, departments and the new Fire Authority.

Darran Gunter, Chief Fire Officer (Designate) for Dorset & Wiltshire Fire and Rescue Service, said: "Since we started on the road to combination, we have been clear that we would need some sort of central 'hub' in the Salisbury area to serve the new organisation. We are delighted to have reached agreement with Wiltshire Council over the use of Five Rivers, and we can now focus on getting the accommodation ready for 1 April 2016, when the new Service comes into being."

He added: "The costs of establishing the new hub are being met from a Transformation Grant from the Government, which is also covering other set-up costs such as consolidating our ICT systems. It is important to state that the hub is not a new headquarters; we want to change the way that we work, to reflect how we will have staff across two counties, and that means moving away from the traditional structures of the past."

Alongside work to progress the new Salisbury hub, a detailed review of the whole Service estate across Wiltshire and Dorset is underway. As such, no decisions have yet been made about the long-term futures of any existing premises.

Mr Gunter said: "It is important to emphasise that we are still in the process of determining which members of staff might be relocated to Salisbury from other parts of Wiltshire and Dorset. It is not a case of just moving a set of offices from one place to another. As the new organisational structure is agreed, it will become clear which functions will need to be based at the hub and where we will be able to explore alternative ways of working, such as home working or focused team office days."

Stay safe this Bonfire Night

With Bonfire Night fast approaching, Wiltshire Fire & Rescue Service is warning people not to take risks with fireworks.

While most people treat fireworks with respect, a small minority treat them as toys and forget that they are actually explosives. To stay safe this Bonfire Night, always remember the following advice:

- Keep pets indoors and ensure that children are kept safe.
- Make sure that fireworks are kept in a closed box and use them one at a time.
- Read and follow the instructions on each firework, using a torch if necessary.
- Light the firework at arm's length with a taper and stand well back.
- Keep naked flames, including cigarettes, away from fireworks.
- Never return to a firework once it has been lit.
- Don't put fireworks in pockets and never throw them.
- Direct any rocket fireworks well away from spectators. Be particularly careful if you are anywhere near thatched properties.
- Never put fireworks, even those which are fully spent, on a bonfire.
- Safely dispose of fully spent fireworks.
- Soak misfired or partly spent fireworks in a container of water in an area where they cannot be tampered with (preferably away from the display site) and contact the manufacturer or supplier for advice on disposal.

Bonfires present additional hazards so, if you must light a bonfire in connection with a fireworks display:

- Site well away from houses, garages, sheds, fences, overhead cables, trees and shrubs, and always away from fireworks.
- Before lighting the fire, check that no pets or children are hiding inside it.
- Build the stack so that it is stable and will not collapse outwards or to one side.
- Never use flammable liquids such as paraffin or petrol to light the fire.
- Don't burn foam-filled furniture, aerosols, paint tins or bottles.
- Keep everyone away from the fire, especially children, who must be supervised all the time.
- In case of emergency, keep buckets of water, the garden hose or a fire extinguisher ready.
- Pour water on the embers before leaving the bonfire.

For further safety advice in the run-up to fireworks night, visit www.wiltsfire.gov.uk/safetyoutdoors

For the latest up-to-date information on fires; operational incidents and community safety advice visit <http://www.wiltsfire.gov.uk>

Michael FRANKLIN

Partnerships & Community Engagement Manager (Wiltshire Council area)

November 2015

NOT PROTECTIVELY MARKED

NOT PROTECTIVELY MARKED

October update 2015

New Learning Disabilities services to launch in Wiltshire

A new modern purpose built service for people with complex learning disabilities and challenging behaviour has moved a step closer for NHS Wiltshire Clinical Commissioning Group (CCG) and Avon and Wiltshire Mental Health Partnership NHS Trust (AWP). Work has commenced on the new building in Devizes and includes accommodation for up to nine people meaning that Wiltshire will be able to provide appropriate care for people with specialist needs closer to home and their families.

The new service will open in the summer of 2016 and will be located on land next to Green Lane Hospital, Devizes.

Wiltshire Clinical Commissioning Group (CCG) and Avon and Wiltshire Mental Health Partnership NHS Trust (AWP) have been developing plans since early 2014 so that Wiltshire people who are currently living out of area can return home to Wiltshire where they can receive services for their complex needs.

Up to nine people will be able to live within a home setting and each living area will be fully equipped with a kitchen, en-suite and lounge allowing independent living and self-management – providing them with a ‘home from home’. The local residential setting will encourage people to maintain their family relationships, build a fulfilled life through participation in the community provide an enhanced quality of life. Their care will be planned, proactive and coordinated with their involvement so that they have choice and control over how their care needs are met – putting them at the centre of everything we do.

AWP are investing £3m into the building, and Wiltshire CCG will be commissioning services to the tune of £1.4m annually. The building is due to be completed in June 2016. Plans and artists impressions are available to view on Wiltshire CCG’s website at

<http://www.wiltshireccg.nhs.uk/news/new-learning-disabilities-service-to-launch-in-wiltshire>

Stay well this Winter campaign

As the days get colder and bugs and illnesses become more common, it’s important to take care of your health. Public Health England have recently launched their annual **Stay Well This Winter** campaign to raise awareness of what you can do to stay healthy this winter and what services are available if you need additional help.

The national **Stay Well This Winter** campaign started on 5 October 2015 and will run until 27 March 2016 and will also be providing advice to help those with long-term health conditions, over 65s, pregnant women and parents of under-sevens stay well by promoting flu vaccinations and advice on staying healthy this winter.

The right healthcare, for you, near you, with you

Get the jab, get Flu Safe

NHS Wiltshire CCG is encouraging people to have their flu jab. Flu is a highly contagious infection that anyone can catch, but it can be very serious for some. For most people flu is a relatively mild illness from which they recover within a week or two – yet every year people, especially those at risk, become seriously ill because they don't get their free flu jab.

Flu is not the same as a cold and it affects people of all ages. If you or someone you care for is in any of the at-risk groups listed below you can get a free flu jab from your GP.

- everyone aged 65 years and over
- all pregnant women irrespective of their stage of pregnancy
- Adults and children over six months with long term heart, lung, kidney, liver or neurological conditions
- people with diabetes
- anyone who has a reduced immunity because of an illness or medical condition
- people with asthma
- anyone in long-stay residential care
- carers of disabled or elderly people and healthcare workers that are in direct contact with patients

Get the best protection for yourself and your family by being flu free this winter and book your appointment today.

Staying Healthy this winter

NHS Wiltshire CCG is urging people to keep warm and well this winter, especially as the nights are starting to draw in and the temperature is dropping.

The cold can have serious consequences as it can increase the risk of strokes and heart attacks as well as causing people to catch colds and flu. Wrapping up warm, keeping the heating turned up, making sure you have enough winter food supplies and keeping a well-stocked medical cabinet in case you do catch a cold or flu are all sensible steps to take.

Some tops tips on staying warm and well this winter.

1. Keep your home warm – set your central heating to between 65 and 70 degrees Fahrenheit (18-21 degrees centigrade). Heat the room you sit in during the day to 70 degrees, and your bedroom to 65 degrees. When it's very cold, set the heating to come on earlier so that you're not waiting for your home to warm up.
2. Have your flu jab. Everyone over 65, or with a wide variety of health conditions, is entitled to one free of charge. Immunity takes effect almost immediately, so even though a flu outbreak is currently well underway, you can still protect yourself by getting the jab – just call your GP to make an appointment.
3. If you do fall ill with flu, it's best to stay at home. Flu is caused by a virus, and cannot be treated with antibiotics – so a visit to your GP is not necessarily the best course of action.
4. Vomiting and diarrhoea bugs caused by norovirus are common and very infectious. This can be a very unpleasant condition, but the best advice is to stay at home and drink plenty of fluids until the symptoms pass. Norovirus is highly infectious, with an incubation period of between one and three days. For that reason, you should wait 48 hours after symptoms have stopped before going back to work or your children go back to school.
5. Make sure you have enough winter supplies and keep a well-stocked medicine cabinet, with supplies of ibuprofen, paracetamol and your favourite cold remedy at hand.

[The right healthcare, for you, near you, with you](#)

Where to go when you're ill - The following points should be helpful when deciding who to contact.

- Pharmacies offer over-the-counter medicines and advice. As well as being open during regular retail hours, they operate an out-of-hours service on a rota basis;
- Call NHS 111 for advice or go to NHS Choices website www.nhs.uk. They can give a wide range of advice and information about many conditions;
- Use the minor injuries units at Chippenham and Trowbridge or the walk-in centres in Swindon and Salisbury for cuts, burns and other injuries – but not for colds, flu or vomiting;
- Make an appointment with your own GP - an out-of-hours service is also available;
- If it is a genuine emergency, go to your local A&E department or call 999 for an ambulance

Keep an eye on elderly or frail friends, neighbours and relatives this winter and join us in helping Wiltshire stay well this winter.

The right healthcare, for you, near you, with you



NHS Complaints Advocacy

NHS advocacy is independent of the NHS. An advocate can guide and support people through the NHS complaints process. The NHS advocacy service for Wiltshire is provided by SEAP, and the service is free, independent and confidential. For further information please email wiltshire@seap.org.uk or visit <http://www.seap.org.uk/services/nhs-complaints-advocacy/>

The Care Quality Commission (CQC) inspection of Salisbury District Hospital

The CQC is the independent regulator of health and adult social care in England. In December the CQC will be carrying out an inspection of Salisbury District Hospital. The CQC is calling on local people to share their experiences of services at the hospital. If you would like to provide any feedback on your experiences of services over the last 12 months, please contact the CQC on telephone 0300 0616161 or email: hospitalinspections@cqc.org.uk. Please ensure that the subject line of your e-mail is Salisbury District Hospital Q3 Acute Hospital Inspections.

Your Care Your Support Wiltshire

Healthwatch Wiltshire, in partnership with Wiltshire Council, has developed a new health and social care information website for the public and professionals. It is called 'Your Care Your Support Wiltshire' - <http://www.yourcareyoursupportwiltshire.org.uk>. The website is still at an early stage which is really exciting for local people as it means that they have a chance to have a say in how it grows. Exciting new developments are planned over the next few months. For example, we will be adding videos and podcasts about health and care information. Some of these videos will feature Wiltshire people talking about their positive experiences of using local services. In addition, there will be a self-referral section that will allow people to refer themselves for support or assessment.

We would like to know what you think about the website so far and your ideas on what you would like to see on the site. Please tell us about local groups and services that are running in your local area and we will add them to the directory of services. You can get involved in discussion groups, reader's panels or just provide feedback in a one-to-one interview or via email. This is your chance to help build a really useful health and social care website fit for Wiltshire people. You can contact us about the website on: 01225 434218 or email: contact@healthwatchwiltshire.co.uk

Contact us:

Tel 01225 434218

info@healthwatchwiltshire.co.uk

www.healthwatchwiltshire.co.uk

Keep up to date with Healthwatch Wiltshire

Healthwatch Wiltshire produce regular newsletters which are full of interesting articles and important dates, if you would like to receive a copy please let us know or follow the link on our website to subscribe www.healthwatchwiltshire.co.uk/subscribe-our-newsletter-0

We are also on Twitter (@HWWilts) if you would like to follow us!

Update for Tidworth Area Board

Name of Parish/Town Council	Everleigh Parish Council
Date of Area Board Meeting	16 November 2015

Headlines/Key successes

- Village Bonfire Night held on Saturday 7th November at Jubilee Field opposite the playground at the end of the Street in Everleigh.
-
-
-
-

Projects

- Playground: Development of BMX track
-
-
-
-

Forthcoming events/Diary dates

- Sat 12 Dec: Village Carol Service at 11am at St Peter's Church followed by a Curry Lunch at the Goa Balti at 12.30pm
-
-
-
-

Signed: Denis Bottomley, Chairman Everleigh Parish Council

Date: 30 Oct 15

Report to	Tidworth Area Board
Date of Meeting	16/11/2015
Title of Report	Community Area Grant funding

Purpose of the report:

To consider the applications for funding listed below

Applicant	Amount requested
Applicant: Girl Guiding Wiltshire South Berwick Management Committee Project Title: New Build for Berwick St James Guide HQ View full application	£5000.00
Applicant: Collingbourne School Project Title: Community netball club View full application	£1000.00
Applicant: Tidworth mums Project Title: Child seating easy use View full application	£910.80

1. Background

Area Boards have authority to approve Area Grants under powers delegated to them. Under the Scheme of Delegation Area Boards must adhere to the [Area Board Grants Guidance](#)

[The funding criteria and application forms](#) are available on the council's website.

2. Main Considerations

2.1. Councillors will need to be satisfied that funding awarded in the 2015/2016 year is made to projects that can realistically proceed within a year of it being awarded.

2.2. Councillors must ensure that the distribution of funding is in accordance with the Scheme of Delegation to Area Boards.

2.3. Councillors will need to be satisfied that the applications meet the Community Area Board grants criteria.

3. Environmental & Community Implications

Grant Funding will contribute to the continuance and/or improvement of cultural, social and community activity and wellbeing in the community area, the extent of which will be dependent upon the individual project.

4. Financial Implications

Financial provision had been made to cover this expenditure.

5. Legal Implications

There are no specific legal implications related to this report.

6. Human Resources Implications

There are no specific human resources implications related to this report.

7. Equality and Inclusion Implications

Community Area Boards must fully consider the equality impacts of their decisions in order to meet the Council's Public Sector Equality Duty.

Community Area Grants will give local community and voluntary groups, Town and Parish Council's equal opportunity to receive funding towards community based projects and schemes, where they meet the funding criteria.

8. Safeguarding Implications

The Area Board has ensured that the necessary policies and procedures are in place to safeguard children, young people and vulnerable adults.

9. Applications for consideration

Application ID	Applicant	Project Proposal	Requested
1458	Girl Guiding Wiltshire South Berwick Management Committee	New Build for Berwick St James Guide HQ	£5000.00
Project Description: Financial assistance for new wooden building in the grounds of Guide Headquarters Berwick St James. Planning permission has been granted to build a purpose designed wooden building for multi-purpose use. Indoor archery shooting and provide two individual rooms for campsite especially during wet weather. Provide disabled access for disabled individuals to sleep whilst at camp. Training rooms for all. This will also make our centre more user friendly and attractive for other organisations to use. I.e. local schools. Disabled groups Duke of Edinburgh Award groups Cubs and Scouts and will allow more users to attend indoor activities as compared with current building.			
Input from Community Engagement Manager: The Tidworth Area Board voted that maintenance and quality of places where young people go to improve safety and experience was one of its main JSA priorities under the children and young people heading. This project will help achieve that aim and also promote military and civilian integration.			
Proposal That the Area Board determines the application.			

Application ID	Applicant	Project Proposal	Requested
1490	Collingbourne School	Community netball club	£1000.00
<p>Project Description: Netball playground markings and adult netball posts.</p> <p>Input from Community Engagement Manager: The Tidworth Area Board voted that encouraging healthy lifestyles was its main JSA priority under the health and wellbeing heading. This request would help promote this strategic priority in Collingbourne Ducis.</p>			
<p>Proposal That the Area Board determines the application.</p>			

Application ID	Applicant	Project Proposal	Requested
1521	Tidworth mums	Child seating easy use	£910.80
<p>Project Description: Improved seating for children at Tidworth mums toddler group which is run 4 mornings a week. There is a need for seating on wheels so they can be moved safely during sessions and without any lifting needed from volunteers.</p> <p>Input from Community Engagement Manager: The Tidworth Area Board voted that Play provision for under 13s was one of its main JSA priorities under the children and young people heading.</p> <p>This project will help achieve that aim and also promotes military and civilian integration amongst families.</p>			
<p>Proposal That the Area Board determines the application.</p>			

No unpublished documents have been relied upon in the preparation of this report

Report Author: Marc Read

AREA BOARD PROJECTS AND COUNCILLOR LED INITIATIVES APPLICATION FORM 2015/2016.

Area Board Project

1. What is the Initiative?

This is a member initiative sponsored by Cllr Chris Williams, to be paid from the 2015/16 revenue budget.

The request for funding is to provide two coaches to and from the School Christmas Concert at the Garrison Theatre, Tidworth.

This is the tenth year Tidworth Community Area Partnership has run the Christmas School's Concert. Six school's within The Tidworth Community Area attend the concert, some 700 children.

2. Where is the initiative taking place?

Tidworth

3. When will the initiative take place?

December 2015

4. What is the Community benefit/evidence of need/links to Community Plan/Community Issue?

The project supports The Military Civilian Integration Programme as well as contributing to the community engagement ambitions contained within the community plan and JSA for the Tidworth Community Area. It also contributes to the recruitment and retention of volunteers for community projects. The event is sponsored by several local organisations making it a real community event.

5. What is the desired outcome of this initiative?

The project supports the Military & Civilian Integration Programme by providing the opportunity for large numbers of military and civilian families to come together and celebrate Christmas .

6. Who will Project Manage this initiative?

Tidworth Community Area Partnership

7. Costs/quotes/ match funding? (total cost £5k require 1 quote, total cost £5k-25k require 3 quotes)

£450

8. Additional information